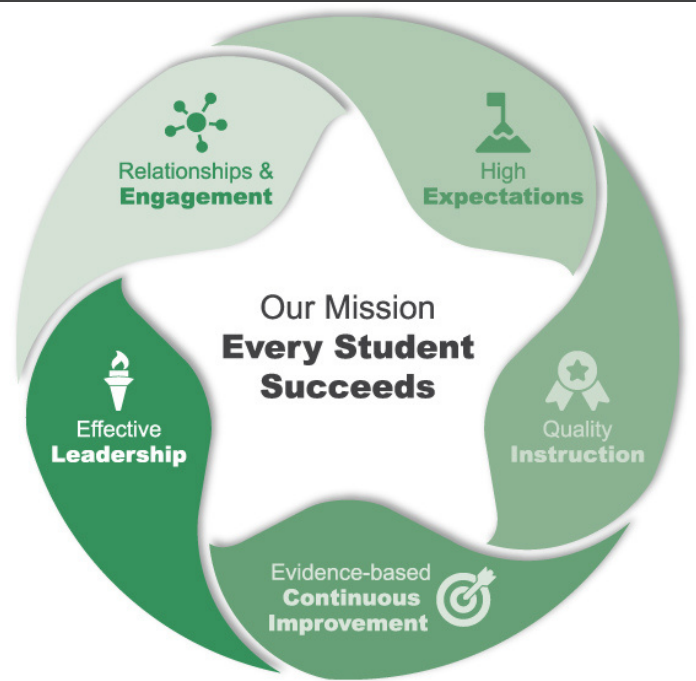




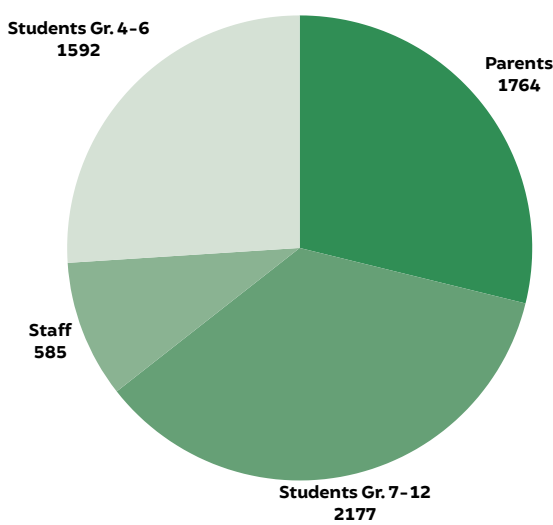
These highlights provide a summary of the information found in our 2022-2023 Alberta Education Results Report.

The intent is to present the information that is most important to our division community.

To review the full report, visit [www.gppsd.ab.ca](http://www.gppsd.ab.ca)



## Division Assurance Survey Responses



## ENGAGEMENT

Engaging with our school communities is key in determining priorities and strategies in the Division Three-Year Education Plan.

Division and Provincial surveys, School Council Meetings and the Board of Trustee Student Advisory Committee are opportunities for parents and students to contribute to division planning.

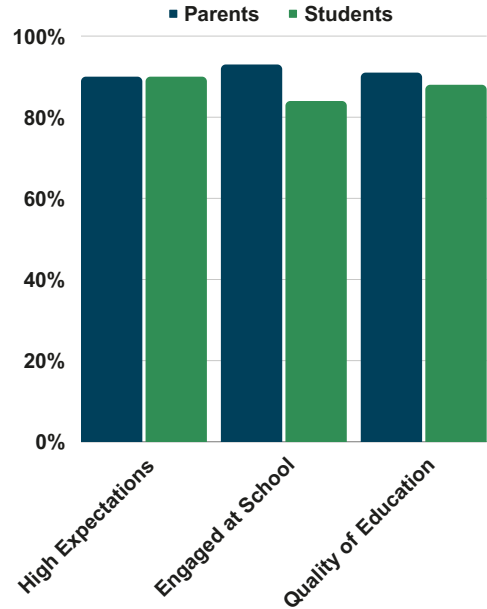
# Priority 1

## TEACHING AND LEARNING

Parent results in the areas of high expectations for student achievement, engagement at school and overall quality of education have increased.

Understanding student perspectives is an ongoing focus in our division.

## Satisfaction



- ✓ Flexible Programming
- ✓ Off Campus Programs
- ✓ Academic Intervention
- ✓ Outreach and Online

## HIGH SCHOOL COMPLETION

Multiple pathways for students in grades 10-12, supports high school completion.

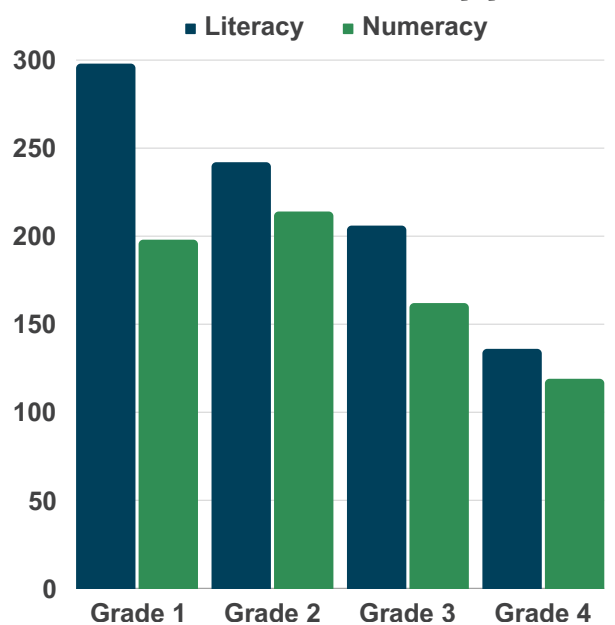
Three-year completion rate: 72.3%  
Five-year completion rate: 82.2%

## LITERACY AND NUMERACY

Assessments are used to identify students requiring intervention supports, to adjust lessons and to identify resources needed.

A targeted literacy and numeracy intervention program, for grades 1-4, has been implemented in all schools.

## Number of Students Supported



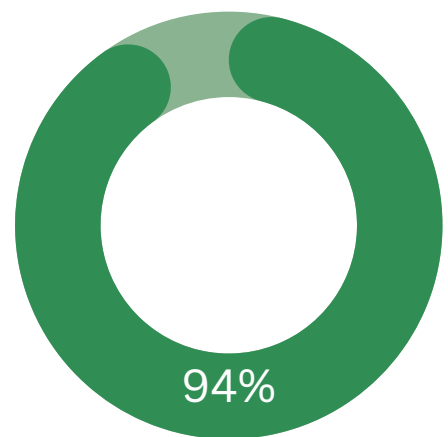
# EVERY STUDENT SUCCEEDS

## Priority 2

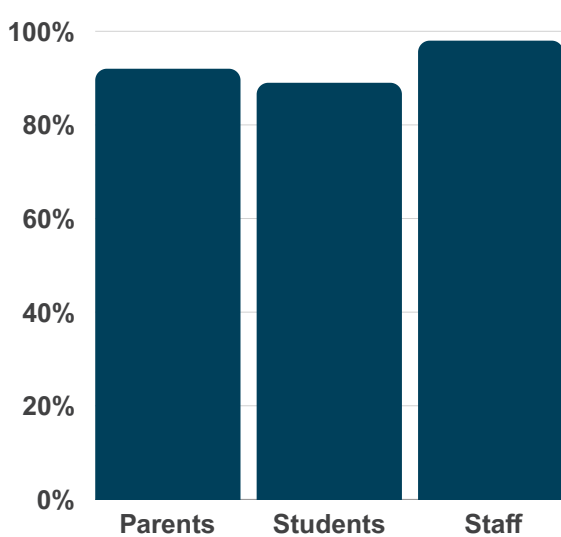
### LEADERSHIP

Prioritizing student growth and achievement requires a commitment to professional learning. School leaders and teachers have embedded time for ongoing growth focused on instructional practices to support optimum learning for all.

### Staff Satisfaction with Professional Learning



### Students are Acquiring and Applying Indigenous Foundational Knowledge



### INDIGENOUS FOUNDATIONAL KNOWLEDGE

The first phase of the division's Indigenous plan focused on embedding Truth and Reconciliation, applying foundational knowledge and Indigenous perspectives in classrooms.

Phase two of the plan is the creation of an Indigenous Learning Holistic Framework to further embed Indigenous foundational knowledge in all classrooms.

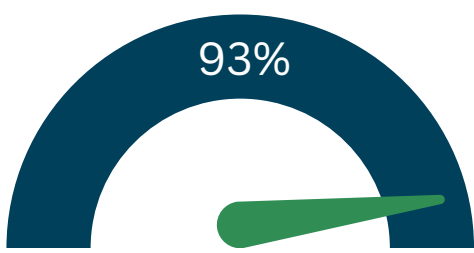
## Priority 3

### INCLUSION

Consistent with the principles of inclusive education, a continuum of supports meets the needs of all students. 80% of parents are satisfied with the quality and access to these supports. The division continues to develop responsive planning that meets the needs of all learners.



### Parent Satisfaction



93% of parents agree that schools are welcoming, caring, respectful and safe environments.

### WELCOMING, CARING, RESPECTFUL AND SAFE

An environment where everyone is treated with respect and dignity and has equal opportunity and access to programs, services, and resources to support the necessary conditions for everyone's success.

### WELLNESS

Staff and student mental health and wellness is a priority. The division's Mental Health Model for supporting students builds consistent support.

The Division Wellness Committee supports staff with monthly wellness information, a sponsored staff wellness day and a culture where wellness is embedded in practice.

### Staff Satisfaction

91% of staff agree their workplace supports their wellness.

